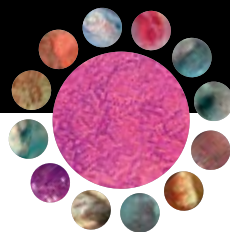


19TH DÜSSELDORF INTERNATIONAL
ENDOSCOPY SYMPOSIUM
FEBRUARY 2—4, 2017

MARITIM HOTEL DÜSSELDORF, AIRPORT CITY, GERMANY

P R O G R A M





PROGRAM

February 2 – 4, 2017
Maritim Hotel Düsseldorf, Airport City, Germany

www.endo-duesseldorf.com



The symposium is endorsed by



World Endoscopy Organization



European Society of Gastrointestinal Endoscopy



German Society for Gastrointestinal,
Digestive and Metabolic Diseases

Scientific Director

Horst Neuhaus

Evangelisches Krankenhaus Düsseldorf, Germany

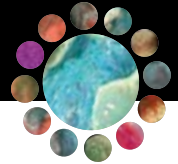
TABLE OF CONTENT

Foreword	Page 03
Satellite symposium on Thursday, February 2, 2017	Page 05
Satellite symposium on Friday, February 3, 2017	Page 06
Scientific Program on Friday, February 3, 2017	Page 07
Scientific Program on Saturday, February 4, 2017	Page 10
Faculty	Page 12
Registration	Page 14
General information	Page 16
Sponsors	Page 20
Exhibitors	Page 22
Arrival	Page 24
Announcement 2018	Page 26
Imprint	Page 26
Registration form	Page 27



**DOWNLOAD THE PROGRAM AS PDF
ON YOUR SMARTPHONE OR IPAD!**

For use you need a QR-Code reader
(available e.g. at the App-Store) and
an Acrobat Reader.



I am delighted to welcome you to the 19th Düsseldorf International Endoscopy Symposium. Since our first meeting it has been our goal to highlight latest developments in endoscopic imaging and minimally invasive approaches to gastrointestinal and biliopancreatic diseases. With our varied program of lectures, discussions and live video presentations by experts from different schools we believe we have created an ideal professional learning environment. The rise in the number of participants and the very positive results of a detailed evaluation of the previous symposia prove that we have been successful in doing so. The faculty, our team, the congress organization, LUX AV and I will be pleased to welcome you. We hope you have an interesting and enjoyable stay in Düsseldorf.

Horst Neuhaus

Learning objectives of the symposium

- Evaluate recent advances in endoscopy; assess their clinical utility and level of evidence
- Apply new endoscopic techniques, instruments and accessories in GI and biliopancreatic diseases compare them with traditional methods and devices
- Choose the optimal endoscopic approach for specific case management
- Manage failed interventions and adverse events
- Recognize the importance of an interdisciplinary approach
- Emphasize the importance of quality in endoscopy

International, multimedia and interactive format

- Live cases transmitted in high definition by a superb professional audiovisual team (LUX AV) from the Evangelisches Krankenhaus Düsseldorf
- Presentations and demonstrations by world renowned thought-leaders and experts
- Mini-symposia, state of the art lecture
- 2 satellite symposia
- 7 breakout sessions
- Symposium for nurses
- Continuous simultaneous translations (German, English, Russian)
- Interactive discussions / Q & A by microphone, SMS, WhatsApp, Twitter or e-mail
- Exhibition of a wide range of conventional and novel biomedical products

FOREWORD

Intended audience

- Gastroenterologists, oncologists, internists
- Surgeons, interventional radiologists
- Nurses
- Trainees, students

Symposium location: Maritim Hotel Düsseldorf

- Situated at the Düsseldorf International Airport and easily accessible by all forms of transport
- Modern conference hall with high quality audiovisual transmission and a spacious area for the exhibition
- Convivial atmosphere for breaks and informal interchanges
- Short distance to the city center for combining work with pleasure (e.g. cultural venues, famous shopping, diversity of restaurants)
- Convenient accommodation at special rates

COCS GmbH - Congress Organization C. Schäfer

- A professional and experienced organization which has successfully managed our previous symposia as well as many other national and international congresses
- Online registration, national certification, CME accreditation will be arranged
- Reasonable registration fee includes all symposium activities, satellite symposia, breakout sessions, lunches, refreshments and free access to the local public transportation system

www.endo-duesseldorf.com

- Program download (English, German, Russian)
- Online registration
- Updated information
- Selected lectures and live video cases



16.00 OLYMPUS SATELLITE SYMPOSIUM

Biliary endoscopy 2017

Chair: *P. N. Meier, Hanover; H. Neuhaus, Düsseldorf*

- 16.00 Introduction
- 16.05 How to improve cannulation and sphincterotomy?
J. Devière, Brussels
- 16.20 Why should we consider using short wire technologies for ERCP?
J. G. Albert, Stuttgart
- 16.35 Role of cholangioscopy in evaluation of indeterminate strictures
T. Itoi, Tokyo
- 16.50 ERCP guided implantation of SEMS: update on indications and techniques
G. Costamagna, Rome
- 17.05 EUS guided biliary drainage: when and how?
A. Meining, Ulm
- 17.20 Optimizing removal of bile duct stones
G. Haber, New York
- 17.35 Round table discussion:
Quality assurance in biliary endoscopy: a global perspective
- 18.00 End of the satellite symposium

Registration required

No credits provided

Language: English and German with simultaneous translation

The symposium takes place in room Mauritius on the first floor



07.00 MEDTRONIC SATELLITE SYMPOSIUM

Hot topics in GI endoscopy

Chair: *R. Bisschops, Leuven; B. Schumacher, Essen*

07.00 Introduction

07.05 Barrett's: should LGD be treated?
J. Bergman, Amsterdam

07.25 Diagnosis and staging of upper GIT tumors:
when do we need EUS ± FNA/FNB?
T. Rösch, Hamburg

07.45 Obscure GI bleeding: first capsule endoscopy or enteroscopy?
Pro capsule: *F. Hagenmüller, Hamburg*
Pro enteroscopy: *H. Yamamoto, Tochigi*

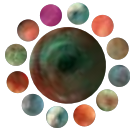
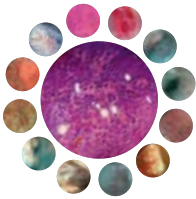
08.15 End of the satellite symposium

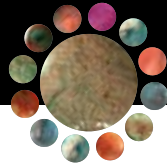
Registration required

No credits provided

Language: English, no simultaneous translation

The symposium takes place in room Mauritius on the first floor





PROGRAM – FRIDAY, FEBRUARY 3, 2017

08.30 INTRODUCTION

08.40 LIVE DEMONSTRATIONS I

Chair: *J. Devière, Brussels; M. Engelke, Herne; G. Haber, New York; A. Meining, Ulm; H. Neuhaus, Düsseldorf; H. Yamamoto, Tochigi*

10.15 Coffee break, visit to the industry exhibition

10.45 1ST MINI-SYMPOSIUM

Endoscopy in IBD: controversial issues

Chair: *F. Hagenmüller, Hamburg; P. N. Meier, Hanover*

10.45 Why and how should we endoscopically determine the disease activity?
R. Bisschops, Leuven

11.00 How can we improve surveillance for early detection of neoplasia?
O. Pech, Regensburg

11.15 Which early neoplastic lesions should be endoscopically treated?
B. Schumacher, Essen

11.30 Questions and answers

11.45 LIVE DEMONSTRATIONS II

Chair: *G. Costamagna, Rome; I. Mostafa, Cairo; O. Pech, Regensburg; H.-J. Schulz, Berlin; K. Wietfeld, Marl; P. Zhou, Shanghai*

13.00 Lunch, visit to the industry exhibition

14.00 LIVE DEMONSTRATIONS III

Chair: *J. G. Albert, Stuttgart; J. Bergman, Amsterdam; M. Giovannini, Marseille; H. Inoue, Tokyo; G. Rettig, Berlin; T. Rösch, Hamburg*

15.45 Coffee break, visit to the industry exhibition

PROGRAM – FRIDAY, FEBRUARY 3, 2017

16.15 2ND MINI-SYMPOSIUM

Interdisciplinary management of cystic pancreatic lesions

Chair: *G. Costamagna, Rome; T. Rösch, Hamburg*

16.15 Diagnostic approach, relevance of EUS-FNA/FNB
M. Giovannini, Marseille

16.30 Individualized treatment

Watchful waiting, EUS guided therapy
T. Itoi, Tokyo

Open and laparoscopic surgical options
W. Hartwig, Munich

17.00 A challenging case
J. Devière, Brussels

17.15 Questions and answers

16.15 **SYMPOSIUM FOR NURSES**

Registration required; **Language: German, no simultaneous translation**

The symposium takes place in room Mauritius on the first floor.

Chair: *U. Pfeifer, Düsseldorf; H.-J. Schulz, Berlin*

16.15 Modern treatment of pancreatic fluid collections
A. Meining, Ulm

16.35 Diagnosis and treatment of Barrett's esophagus in a team approach
O. Pech, Regensburg; U. Pfeifer, Düsseldorf

17.00 Challenging cases of complications: what would you have done?
P. N. Meier, Hanover

17.20 Risk management and troubleshooting in endoscopy
M. Engelke, Herne

17.40 Patient information and informed consent: how to apply the law in clinical practice?
J. G. Albert, Stuttgart

18.00 End of the symposium

17.30

SNACK WITH THE EXPERTS

Breakout sessions for questions and answers

Registration required; Language: English, no simultaneous translation

A) Update on POEM and endoscopic antireflux therapy

T. Beyna; G. Costamagna, H. Inoue

B) Barrett's esophagus: pitfalls in endoscopic management

J. Bergman; P. N. Meier, O. Pech

C) Resection of gastroduodenal mucosal and subepithelial lesions

A. Meining; T. Rösch, P. Zhou

D) Rational treatment of upper GI bleeding

R. Bisschops; F. Hagenmüller, I. Mostafa

E) Approach to complex bile duct stones

J. Devière; H. Neuhaus, H.-J. Schulz

F) Management of pancreatic fluid collections

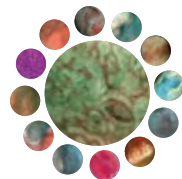
J. G. Albert; M. Giovannini, W. Hartwig, T. Itoi

G) Recurrent colorectal polyps: EMR, ESD, FTRD, avulsion or laparoscopic resection?

G. Haber; B. Schumacher, H. Yamamoto

18.30

End of the first day of the symposium





08.30 3RD MINI-SYMPOSIUM

Serrated colorectal lesions

Chair: *H. Yamamoto, Tochigi; H. Neuhaus, Düsseldorf*

08.30 Definition, epidemiology and prognosis

A. Tannapfel, Bochum

08.45 Endoscopic detection and characterization

R. Bisschops, Leuven

09.00 Evidence based and personalized endoscopic treatment

Small/multiple serrated lesions

T. Rösch, Hamburg

Advanced serrated lesions and adenomas

G. Haber, New York

09.30 Questions and answers

10.00 Coffee break, visit to the industry exhibition

10.30 LIVE DEMONSTRATIONS IV

Chair: *R. Bisschops, Leuven; F. Hagenmüller, Hamburg; T. Itoi, Tokyo; P. N. Meier, Hanover; B. Schumacher, Essen; H. R. Tillgaard, Aabenraa*

12.35 STATE OF THE ART LECTURE

Chair: *G. Haber, New York*

Endolumenal treatment of esophageal and gastric motility disorders

H. Inoue, Tokyo

12.55 Lunch, visit to the industry exhibition

13.35 Update on clinical and histological results of the live procedures

J. Kandler, Düsseldorf; P. Reinecke, Düsseldorf

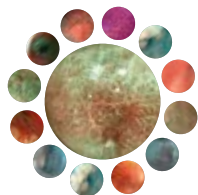
PROGRAM – SATURDAY, FEBRUARY 4, 2017

13.50 4TH MINI-SYMPOSIUM

New technologies

Chair: *J. Devière, Brussels; A. Meining, Ulm; H.-J. Schulz, Berlin*

- 13.50 Hemospray for bleeding esophageal varices
I. Mostafa, Cairo
- 14.06 New ablation techniques for Barrett`s epithelium
J. Bergman, Amsterdam
- 14.22 Update on submucosal tunneling endoscopic resection
P. Zhou, Shanghai
- 14.38 Pocket creation method for ESD
H. Yamamoto, Tochigi
- 14.54 Endoscopic procedures for metabolic regeneration
G. Costamagna, Rome
- 15.10 EUS guided ablation in patients with pancreatic adenocarcinoma
M. Giovannini, Marseille
- 15.26 Motorized endoscopy
T. Beyna, Düsseldorf
- 15.45 End of the symposium



FACULTY

INTERNATIONAL



Bergman, Jacques, MD, Prof.
Department of Gastroenterology & Hepatology, Academic Medical Center/University of Amsterdam Amsterdam, The Netherlands



Bisschops, Raf, MD, Prof.
Department of Gastroenterology and Hepatology, University Hospitals Leuven Leuven, Belgium



Costamagna, Guido, MD, Prof.
Istituto di Clinica Chirurgica, Università Cattolica del S. Cuore Rome, Italy



Devrière, Jacques, MD, Prof.
Department of Gastroenterology and Hepato-Pancreatology, Université Libre des Bruxelles Brussels, Belgium



Giovannini, Marc, MD, Prof.
Oncologie Médicale, L'Institut Paoli-Calmettes Marseille, France



Haber, Greg, MD, Prof.
Department of Gastroenterology, New York University Langone Medical Center New York, USA



Inoue, Haruhiro, MD, Prof.
Digestive Diseases Center, Showa University Koto-Toyosu Hospital Tokyo, Japan



Itoi, Takao, MD, Prof.
Department of Gastroenterology and Hepatology, Tokyo Medical University Tokyo, Japan



Mostafa, Ibrahim, MD, Prof.
Department of Gastroenterology and Hepatology, Theodor Bilharz Research Institute Cairo, Egypt



Tillgaard, Helle Roy
Hospital of Southern Jutland Aabenraa, Denmark



Yamamoto, Hironori, MD, Prof.
Department of Medicine, Division of Gastroenterology, Jichi Medical University Tochigi, Japan



Zhou, Pinghong, MD, Prof.
Endoscopy Center Zhongshan Hospital, Fudan University Shanghai, China

NATIONAL



Albert, Jörg G., Prof. Dr.
Abteilung für Gastroenterologie, Hepatologie und Endokrinologie, Robert-Bosch-Krankenhaus Stuttgart



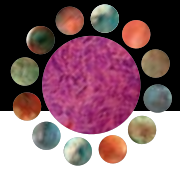
Engelke, Monika
Bildungszentrum Ruhr Herne



Hagenmüller, Friedrich, Prof. Dr.
Innere Medizin I, Asklepios Klinik Altona Hamburg



Hartwig, Werner, Prof. Dr.
Klinik für Allgemein-, Viszeral-, Gefäß- und Transplantationschirurgie, LMU Klinikum der Universität München Munich



Meier, Peter N., Dr.
Med. Klinik II,
DIAKOVERE Henriettenstift
Hanover



Meining, Alexander, Prof. Dr.
Klinik für Innere Medizin I,
Universitätsklinik Ulm
Ulm



Pech, Oliver, Prof. Dr.
Gastroenterologie, Krankenhaus
Barmherzige Brüder
Regensburg



Rettig, Gudrun
Klinik für Innere Medizin, Sana
Klinikum Lichtenberg
Berlin



Rösch, Thomas, Prof. Dr.
Klinik für Interdisziplinäre
Endoskopie, Universitätsklinikum
Hamburg-Eppendorf
Hamburg



Schulz, Hans-Joachim, Prof. Dr.
Klinik für Innere Medizin, Sana
Klinikum Berlin-Lichtenberg
Berlin



Schumacher, Brigitte, PD Dr.
Klinik für Innere Medizin und
Gastroenterologie, Elisabeth-
Krankenhaus Essen, Essen



Tannapfel, Andrea, Prof. Dr.
Institut für Pathologie, Ruhr-
Universität Bochum
Bochum



Wietfeld, Kornelia
Abteilung für Endoskopie,
Paracelsus-Klinik Marl
Marl

LOCAL



Reinecke, Petra, Prof. Dr.
Institut für Pathologie,
Universitätsklinikum Düsseldorf
Düsseldorf



Balasus, Nicole, Dr.
Medizinische Klinik, Evangelisches
Krankenhaus Düsseldorf
Düsseldorf



Bender, Philipp, Dr.
Medizinische Klinik, Evangelisches
Krankenhaus Düsseldorf
Düsseldorf



Beyna, Torsten, Dr.
Medizinische Klinik, Evangelisches
Krankenhaus Düsseldorf
Düsseldorf



Gerges, Christian, Dr.
Medizinische Klinik, Evangelisches
Krankenhaus Düsseldorf
Düsseldorf



Kandler, Jennis, Dr.
Medizinische Klinik, Evangelisches
Krankenhaus Düsseldorf
Düsseldorf



Neuhaus, Horst, Prof. Dr.
Medizinische Klinik, Evangelisches
Krankenhaus Düsseldorf
Düsseldorf



Pfeifer, Ute, Dr.
Medizinische Klinik, Evangelisches
Krankenhaus Düsseldorf
Düsseldorf



Ragheb, André, Dr.
Medizinische Klinik, Evangelisches
Krankenhaus Düsseldorf
Düsseldorf



Registration Fee

The registration fee includes admission to all scientific presentations, coffee breaks and lunch on Friday and Saturday and a ticket for public transport on February 3 and 4, 2017.

Registration and payment	until Dec 15, 2016	after Dec 16, 2016
Physician	EUR 130,-	EUR 170,-
Member of ESGE/bng	EUR 110,-	EUR 150,-
Endoscopy assistance	EUR 40,-	EUR 60,-
Student (with certification)	EUR 20,-	EUR 30,-
One day ticket (only on-site)		EUR 100,-

The participation in the satellite symposia is free of charge.

Registration

Registration is preferred on our website **www.endo-duesseldorf.com**. You can also use enclosed registration form on page 27 (please return to mentioned address). Registration deadline is **January 16, 2017**. Please register on-site after this date. You will receive a confirmation **after** payment.

A separate registration is needed for the following sessions: **Satellite symposium** on Thursday, February 2, 2017 (with translation), **Satellite symposium** on Friday, February 3, 2017 (Language: English), **Snack with the experts** on Friday, February 3, 2017 (Language: English), **Symposium for nurses** on Friday, February 3, 2017 (Language: German)

Payment

Please indicate on your bank transfer **„Endo2017“** and the **name of the participant**. After January 16, 2017 payments can only be accepted on-site.

Bank transfer to:
 COCS GmbH, Munich
 HypoVereinsbank Munich
 IBAN: DE69 7002 0270 0039 6176 76
 BIC: HYVEDE MMXXX

Please note that we do not cover any bank charges.

Cancellation

In case of cancellation until January 16, 2017 we will reimburse your payment but an administration service fee of EUR 20,- will be charged. No refunds will be made in the event of any cancellations received after January 16, 2017.

GENERAL INFORMATION



Scientific Director

Horst Neuhaus
Evangelisches Krankenhaus Düsseldorf
Kirchfeldstr. 40
40217 Düsseldorf, Germany
Phone: +49 (0)211 / 919 16 05, Fax: +49 (0)211 / 919 39 60
E-mail: sabine.kindler@evk-duesseldorf.de
www.evk-duesseldorf.de

Congress Organizer



COCS GmbH – Congress Organisation C. Schäfer
Rosenheimer Str. 145c
81671 Munich, Germany
Phone: +49 (0)89 / 89 06 77 - 0, Fax: +49 (0)89 / 89 06 77 - 77
E-mail: sandra.reber@cocs.de
www.cocs.de



Congress Coordination

Nicole Balasus
Philipp Bender
Torsten Beyna
Christian Gerges
Jennis Kandler
André Ragheb

Congress Location

Maritim Hotel Düsseldorf
Maritim-Platz 1
40474 Düsseldorf, Germany
www.maritim.de

Homepage

www.endo-duesseldorf.com

Opening Hours

Thursday, February 2, 2017 14.00 – 18.00

Registration Desk

Friday, February 3, 2017 6.30 – 18.30

Saturday, February 4, 2017 8.00 – 16.00

Exhibition

An exhibition of biomedical and pharmaceutical products will be presented during the symposium. A list of exhibitors can be found on page 22/23.

Opening Hours of the Exhibition

Friday, February 3, 2017 8.00 – 18.00

Saturday, February 4, 2017 8.00 – 15.30

GENERAL INFORMATION

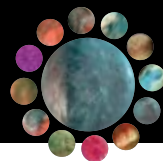
Photography / filming

No photography or filming during lectures or live demonstrations permitted. The organizers will share selected recordings, lectures and edited live demonstrations on the website (www.endo-duesseldorf.com).

Please advise in advance should you not wish to be recorded.

Interactive discussion

Questions or comments during the sessions can be send via microphone, SMS, WhatsApp, Twitter or e-mail: endo@luxav.org



- Hotel Reservation** We have arranged a special rate at the Maritim Hotel Düsseldorf for our participants, valid for reservation made for your stay from February 2 to 4, 2017. Please book online under www.endo-duesseldorf.com using **the reference Endo 2017** as soon as possible but not later than **December 16, 2016**.
- Certification** All participants will receive a confirmation of participation at the end of the symposium. The symposium will be certified by the Ärztekammer Nordrhein. An international certification as well as an endoscopy assistance certification will be arranged.
- Free Public Transport** Use of public transport VRR (Verkehrsverbund Rhein-Ruhr) on both days of the core meeting (February 3-4) will be permitted free of charge upon presentation of your name tag. This includes the regional train within the VRR, all buses, trams and metros (U- and S-Bahn).
- Congress Language** The congress language is German and English with simultaneous translation during the entire meeting. Furthermore, there will be simultaneous translation into Russian. The symposium for nurses will be held in German only, the symposium on Friday morning and the snack with the experts will be held in English only.
- Congress Program** You will find a German, English and Russian version of the program on the website **www.endo-duesseldorf.com**.
- Congress Documents** Congress documents will be distributed on-site at the registration desk in the Maritim Hotel. Participants from Germany, Austria and Switzerland will receive their congress documents by mail if payments are received by January 16, 2017.
- Name Tags** For all participants it is mandatory to wear the name tag visible.
- Liability** The congress organizer will bear no liability for loss, accident, damage or injury to persons or property irrespective of the cause. The client participates at all sessions, tours and events at his/her own risk. Sole place of jurisdiction is Munich, Germany. German law is applicable.



SPONSORS

We would like to thank the following companies for their professional and financial support of the symposium (valid at time of printing - without engagement):

Principal Sponsors



Olympus Deutschland GmbH, Hamburg
www.olympus.de



Boston Scientific GmbH, Ratingen
www.bostonscientific.com



Cook Medical, Limerick, Ireland
www.cookmedical.com



ERBE Elektromedizin GmbH, Tübingen
www.erbe-med.com



Dr. Falk Pharma GmbH, Freiburg
www.dralkpharma.de



Medtronic, Zurich, Switzerland
www.medtronic.com

SPONSORS



Major Sponsors



Cantel Medcial / Medivators,
PC Heerlen, The Netherlands
www.medivators.eu



Ferring Arzneimittel GmbH, Kiel
www.ferring.de



Fractyl Laboratories Inc., Lexington, USA
www.fractyl.com



FUJIFILM Europe GmbH, Düsseldorf
www.fujifilm.eu



MTW-Endoskopie W. Haag KG, Wesel
www.mtw-endoskopie.de



Norgine GmbH, Marburg
www.norgine.de



PENTAX Europe GmbH, Hamburg
www.pentaxmedical.com



Takeda Pharma Vertrieb GmbH & Co. KG, Berlin
www.takeda.de



US Endoscopy, Mentor, Ohio, USA
www.usendoscopy.com

Regular Sponsors



EndoChoice GmbH, Halstenbek
www.endochoice.de



mandel + rupp GmbH, Erkrath
www.mandel-rupp.de



Medwork GmbH, Höchststadt
www.medwork.com



MICRO-TECH Europe GmbH, Düsseldorf
www.micro-tech-europe.com



Ovesco Endoscopy AG, Tübingen
www.ovesco.com



Taewoong Medical, Goyang-si, Korea
www.taewoongmedical.com

EXHIBITORS

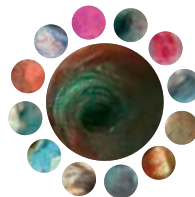
AP Nenno Medizintechnik GmbH, Marl	www.ap-nenno.de
Belimed GmbH, Mühlendorf am Inn	www.belimed.com
BHT Hygienetechnik GmbH, Gersthofen	www.bht.de
Boston Scientific GmbH, Ratingen	www.bostonscientific.com
Bracco Imaging Deutschland GmbH, Konstanz	www.braccoimaging.de
Cantel Medical / Medivators, PC Heerlen, The Netherlands	www.medivators.eu
Cook Medical, Limerick, Ireland	www.cookmedical.com
DEGEA - Deutsche Gesellschaft für Endoskopiefachberufe e.V., Herne	www.degea.de
DGE-BV - Deutsche Gesellschaft für Endoskopie und Bildgebende Verfahren e.V., Munich	www.dge-bv.de
E & L medical systems GmbH, Erlangen	www.eundl.de
Endo-Flex GmbH, Voerde	www.endo-flex.de
Endo-Technik GmbH, Solingen	www.endo-technik.de
EndoChoice GmbH, Halstenbek	www.endochoice.de
Endomed Endoskopie + Hygiene GmbH, Pfungstadt	www.endomed.de
ERBE Elektromedizin GmbH, Tübingen	www.erbe-med.com
ESGE – European Society of Gastrointestinal Endoscopy, Munich	www.esge.com
Dr. Falk Pharma GmbH, Freiburg	www.dralkpharma.de
Ferring Arzneimittel GmbH, Kiel	www.ferring.de
Fractyl Laboratories Inc., Lexington, USA	www.fractyl.com
Fresenius Kabi Deutschland GmbH, Bad Homburg	www.fresenius-kabi.de
FUJIFILM Europe GmbH, Düsseldorf	www.fujifilm.eu
Insitumed GmbH, Wentorf	www.insitumed.com
Interlock Medizintechnik GmbH, Lensahn	www.interlockmed.com
Janssen-Cilag GmbH, Neuss	www.janssen-cilag.de
Karl Storz GmbH & Co. KG, Tuttlingen	www.karlstorz.com
Laborie MMS Deutschland GmbH, Bottrop	www.mms-deutschland.de
Lehmanns Media GmbH, Düsseldorf	www.lehmanns.de

EXHIBITORS

Leufen Medical GmbH, Berlin	www.leufen-medical.eu
mandel + rupp GmbH, Erkrath	www.mandel-rupp.de
Medi-Globe GmbH, Achenmühle	www.medi-globe.de
Medtronic, Zurich, Switzerland	www.medtronic.com
Medwork GmbH, Höchststadt	www.medwork.com
MICRO-TECH Europe GmbH, Düsseldorf	www.micro-tech-europe.com
MSD Sharp & Dohme GmbH, Haar	www.msd.de
MTW-Endoskopie W. Haag KG, Wesel	www.mtw-endoskopie.de
Norgine GmbH, Marburg	www.norgine.de
Olympus Deutschland GmbH, Hamburg	www.olympus.de
Ovesco Endoscopy AG, Tübingen	www.ovesco.com
Pajunk Medical Produkte GmbH, Geisingen	www.pajunk.com
Pauldrach medical GmbH, Garbsen	www.pauldrach-medical.de
PENTAX Europe GmbH, Hamburg	www.pentaxmedical.com
Peter Pflugbeil GmbH, Zorneding	www.pflugbeil.com
Promedia Medizintechnik A. Ahnfeldt GmbH, Siegen	www.gastro-funktionsdiagnostik.de
Shire Deutschland GmbH, Berlin	www.shire.com
Sintetica GmbH, Aschaffenburg	www.sintetica.com
Standard Instruments GmbH, Karlsruhe	www.stdi.de
Taewoong Medical, Goyang-si, Korea	www.taewoongmedical.com
Takeda Pharma Vertrieb GmbH & Co. KG, Berlin	www.takeda.de
US Endoscopy, Mentor, Ohio, USA	www.usendoscopy.com
Chemische Fabrik Dr. Weigert GmbH & Co. KG, Hamburg	www.drweigert.de
Wieser Medizintechnik und Geräte GmbH, Egenhofen	www.wiesermedizintechnik.de

Subject to the regulations of the FSA-code the financial support of the FSA-members is revealed on the website and on-site by request.

Without engagement – status print date



ARRIVAL

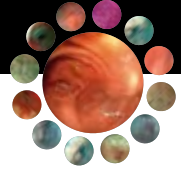
Arrival Maritim Hotel



VRR public transportation



ARRIVAL



Congress Venue

Maritim Hotel Düsseldorf
Maritim-Platz 1
40474 Düsseldorf, Germany

Arrival by airplane

From terminal C you will find a direct terminal connection to the Maritim Hotel.

Discounted travel offers with Lufthansa and detailed information can be found on the the website www.endo-duesseldorf.com at travel information.

Arrival by train

Take the train to Düsseldorf Airport 'Fernbahnhof' and change for the Sky train to Terminal C. A direct terminal connection leads you to the Maritim Hotel.

In cooperation with the Deutsche Bahn an exclusive offer with discounted ticket prices can be found on the website www.endo-duesseldorf.com at travel information.

Arrival by car

Leave the motorway A44 at the exit 'Düsseldorf Flughafen'. Follow the sign 'Airport City'. The Maritim Hotel is located directly in front of you. Maritim Parking garage EUR 16,- per day (regular price EUR 25,-). There are alternative parking facilities at the airport parking garage P8. No discount is possible there.

Arrival by metro

Take the S11 to airport Terminal C. A direct terminal connection leads you to the Maritim Hotel.

Use of public transportation VRR (Verkehrsverbund Rhein-Ruhr) on both days of the core meeting (February 3–4) will be permitted free of charge upon presentation of your name tag. This includes the regional train within the VRR, all buses, trams and metros (U- and S-Bahn).

20TH DÜSSELDORF INTERNATIONAL ENDOSCOPY SYMPOSIUM

February 1 – 3, 2018 – Maritim Hotel Düsseldorf, Airport City, Germany

Scientific Director

Horst Neuhaus
Evangelisches Krankenhaus Düsseldorf
Kirchfeldstr. 40
40217 Düsseldorf, Germany
Phone: +49 (0)211 / 919 16 05, Fax: +49 (0)211 / 919 39 60
E-mail: sabine.kindler@evk-duesseldorf.de
www.evk-duesseldorf.de

Congress Organizer



COCS GmbH - Congress Organisation C. Schäfer
Rosenheimer Str. 145c
81671 Munich, Germany
Phone: +49 (0)89 / 89 06 77 – 0, Fax: +49 (0)89 / 89 06 77 - 77
E-mail: sandra.reber@coccs.de
www.cocs.de

www.endo-duesseldorf.com

IMPRINT

Scientific Director

Horst Neuhaus
Evangelisches Krankenhaus Düsseldorf
Kirchfeldstr. 40
40217 Düsseldorf, Germany
Phone: +49 (0)211 / 919 16 05, Fax: +49 (0)211 / 919 39 60
E-mail: sabine.kindler@evk-duesseldorf.de
www.evk-duesseldorf.de

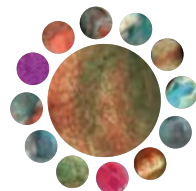
Publishing House

Wecom
Gesellschaft für Kommunikation mbH & Co. KG
Lerchenkamp 11
31137 Hildesheim, Germany
Phone: +49 (0)5121 / 20 66 60, Fax: +49 (0)5121 / 206 66 12
E-mail: info@we-com.de

Layout

Helmut Rottke Werbung/Elsenbach Design

Olympus Deutschland GmbH supports the mailing of the congress program.



**19TH DÜSSELDORF INTERNATIONAL
ENDOSCOPY SYMPOSIUM**

February 2 – 4, 2017 – Maritim Hotel Düsseldorf, Airport City

I will participate at the symposium:

	Registration and payment until Dec 15, 2016	after Dec 16, 2016
<input type="radio"/> Physician	EUR 130,-	EUR 170,-
<input type="radio"/> Member of ESGE	EUR 110,-	EUR 150,-
<input type="radio"/> Member of bng	EUR 110,-	EUR 150,-
<input type="radio"/> Endoscopy assistance	EUR 40,-	EUR 60,-
<input type="radio"/> Student (with certification)	EUR 20,-	EUR 30,-

I take part in the **Satellite symposium** (please see page 5)
February 2, 2017, 16.00–18.00

I take part in the **Satellite symposium** (please see page 6)
February 3, 2017, 07.00–08.15

I take part in the **Symposium for nurses** (please see page 8)
February 3, 2017, 16.15–18.00

I take part in the **Snack with the experts** (please see page 9)
February 3, 2017, 17.30–18.30

- A) Update on POEM and endoscopic antireflux therapy
- B) Barrett’s esophagus: pitfalls in endoscopic management
- C) Resection of gastroduodenal lesions
- D) Rational treatment of upper GI bleeding
- E) Approach to complex bile duct stones
- F) Management of pancreatic fluid collections
- G) Recurrent colorectal polyps

Please remit the amount until January 16, 2017 to the account of
COCS GmbH, Munich

HypoVereinsbank Munich
IBAN: DE69 7002 0270 0039 6176 76
BIC: HYVEDEMMXXX

Subject: ENDO2017 and name of the participant
Confirmation **after** payment.

- I hereby agree to receive further information concerning this event
via e-mail.
- I do not want to receive further information via e-mail.

.....
Date, Signature (sender’s address overleaf)

I confirm that I have read and accept the general terms and conditions.



REGISTRATION FORM



Please separate and return to given address.

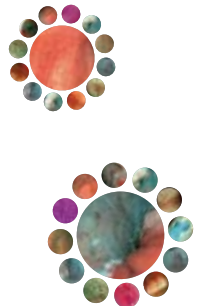
Deadline:
January 16, 2017

Registration also at
www.endo-duesseldorf.com
or by fax:
+49 (0)89 / 89 06 77 - 77

REGISTRATION

via mail or online at
www.endo-duesseldorf.com

COCS GmbH
Congress Organisation C. Schäfer
Rosenheimer Str. 145c
81671 Munich
Germany



Mrs. Mr. Prof. Dr.

First Name

Last Name

Institution

Department

Street

Postal Code

City

Phone

E-mail

statistical data

practical

clinical

specialty:

gastroenterology

surgery

internal medicine

others

